

Load holding - lowering valves BV700 NG 6 up to 700 bar up to 25 l/min

Features

Direct operated valves.
Seated valves in sandwich mounting execution. Porting NG 6 according to DIN 24340.
Pilot pressure adjustable up to max. 350 bar.



Application

Load holding and lowering of loads with double acting cylinders.

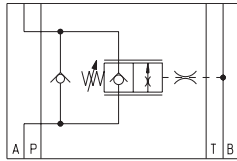
Technical data

Hydraulic fluid	mineral oil according to DIN 51524 (other fluids on request)
Fluid temperature range	NBR: -30 to 80 °C FPM: -20 to 80 °C
Ambient temperature range	-30 to 50 °C
Viscosity range	5 to 400 cSt (optimal: 10 - 68 cSt)
Porting	NG 6 according to DIN 24340 / ISO 4401 / CETOP RP 121 H
Operating pressure max. connection P, A, B	700 bar
Pressure admissible max. connection T	350 bar
Flow rate max.	25 l/min
Filtration	according to NAS 1638, class 6 or ISO/DIN 4406 15/12
Weight	2,3 kg
Material / surface treatment	housing: steel blued cartridge: steel-corrosion resistant adjusting knob: plastic
Pilot pressure adjustable	50 bar up to 350 bar

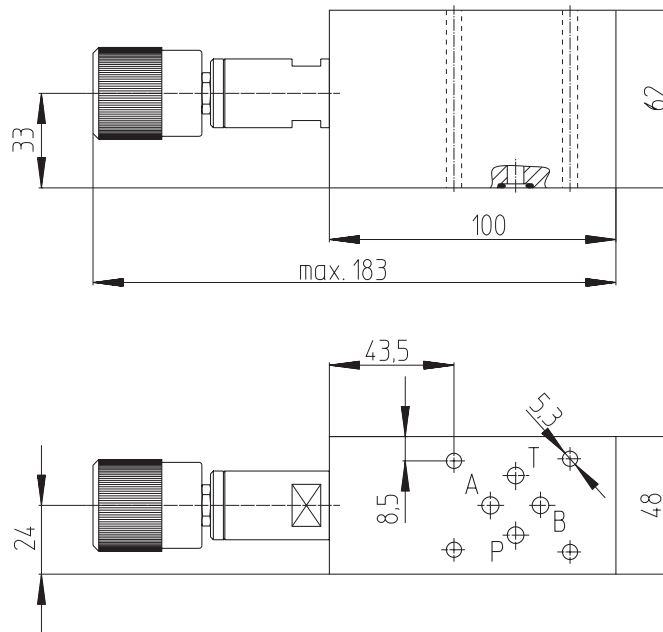
Load holding - lowering valves BV700 NG 6 up to 700 bar up to 25 l/min

Type	Seales
SBV700-6-A-350-P-A*00	P (NBR)
SBV700-6-A-350-V-A*00	V (FPM)

Symbol



Dimension drawings



Accessories

For each valve the following is included:
4 pieces O-rings 9,25 x 1,78 mm
90°ShA part no. 900195
Adjusting knob mounted
Cap in addition

Tie bolts / fixing screws and subplates see
technical data sheet AP / RP

Operating instructions see BA-BV700



Bieri Hydraulik AG
Könizstrasse 274
CH-3097 Liebefeld/Switzerland

Telephone +41 31 970 09 09
Fax +41 31 970 09 10
sales@bierihydraulik.com

Design and data subject to modification

SBV700-GB-04-10